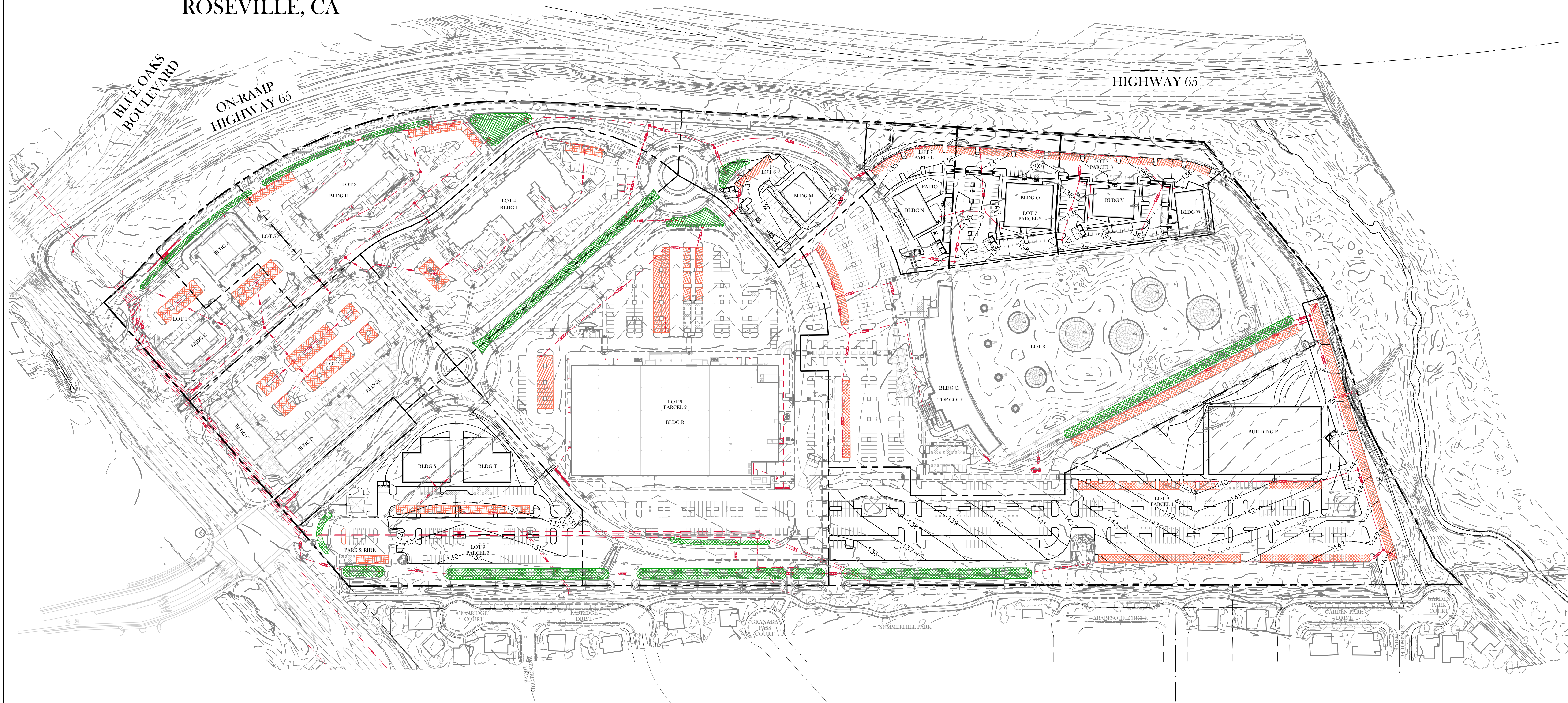
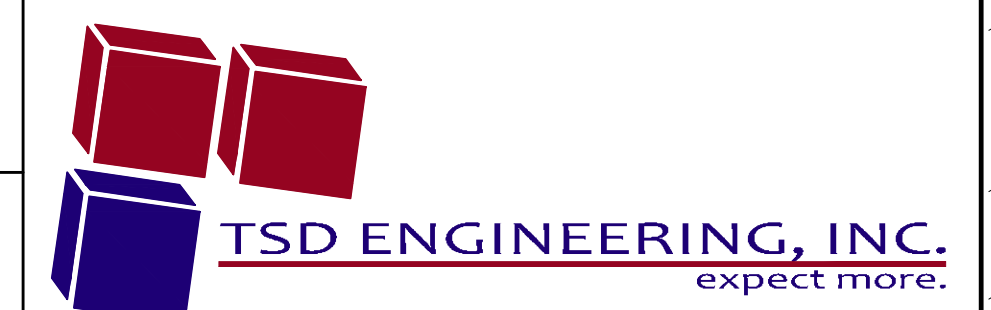
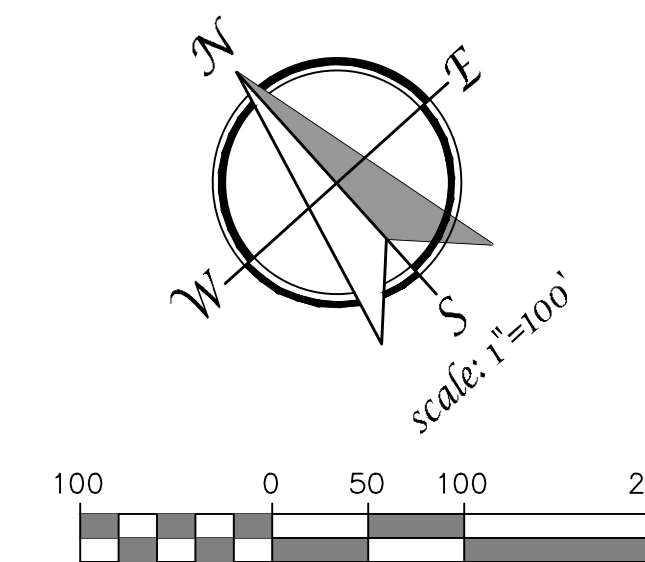


NCRSP - PARCEL 49

MAJOR PROJECT PERMIT - STAGE 1
ROSEVILLE, CA



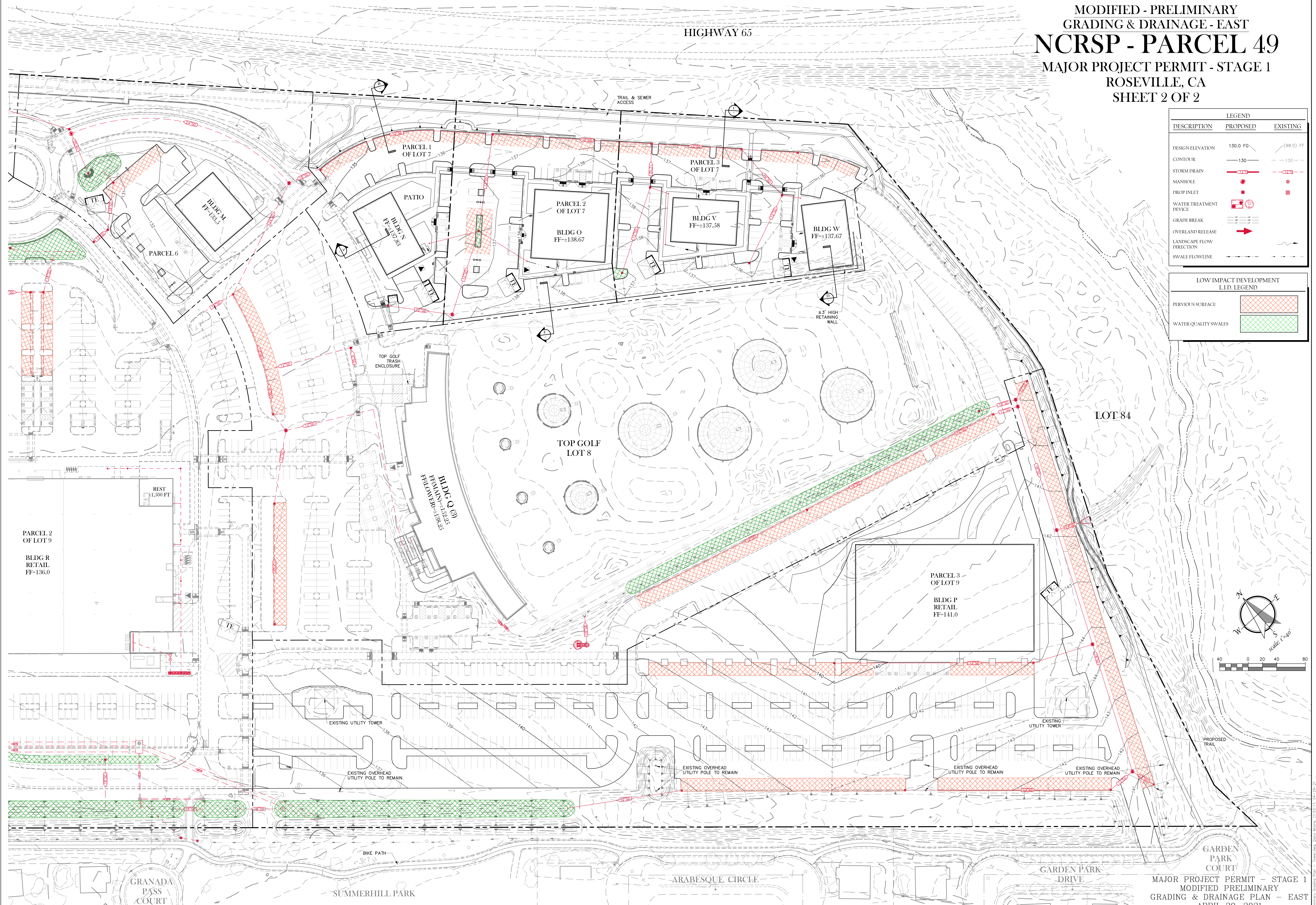
PRELIMINARY
GRADING & DRAINAGE PLAN
JULY 2, 2020



785 Orchard Drive, Suite #110
Folsom, CA 95630
Phone: (916) 608-0707
Fax: (916) 608-0701

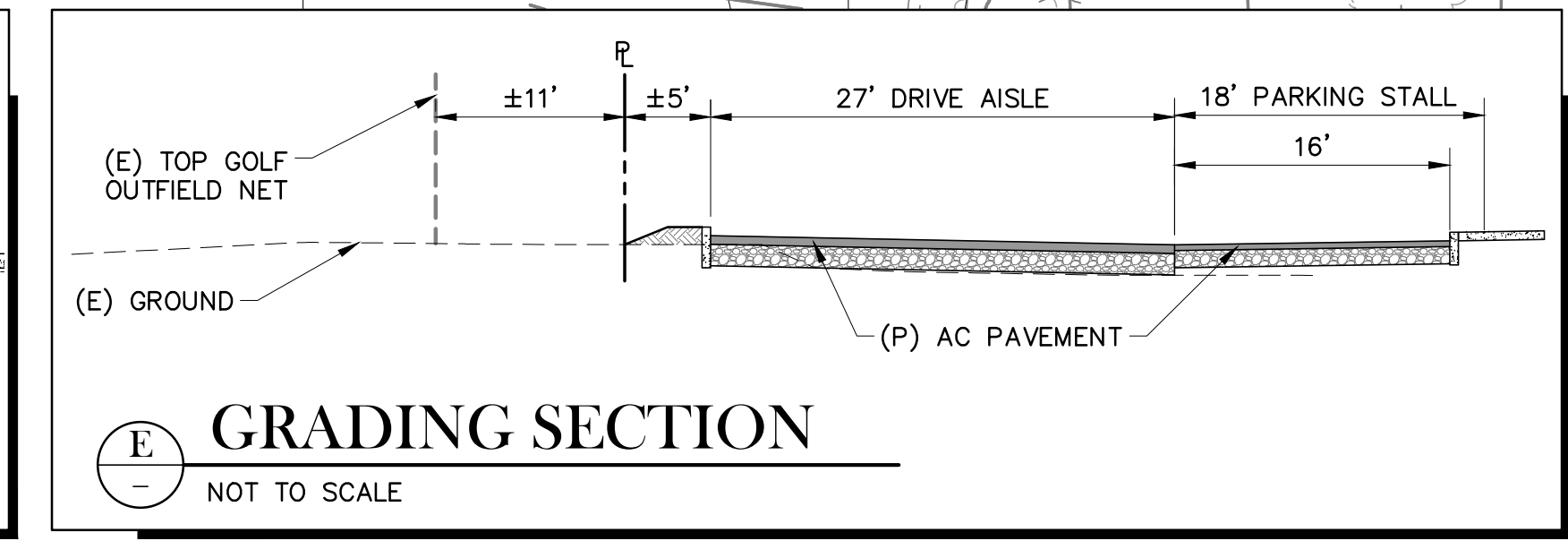
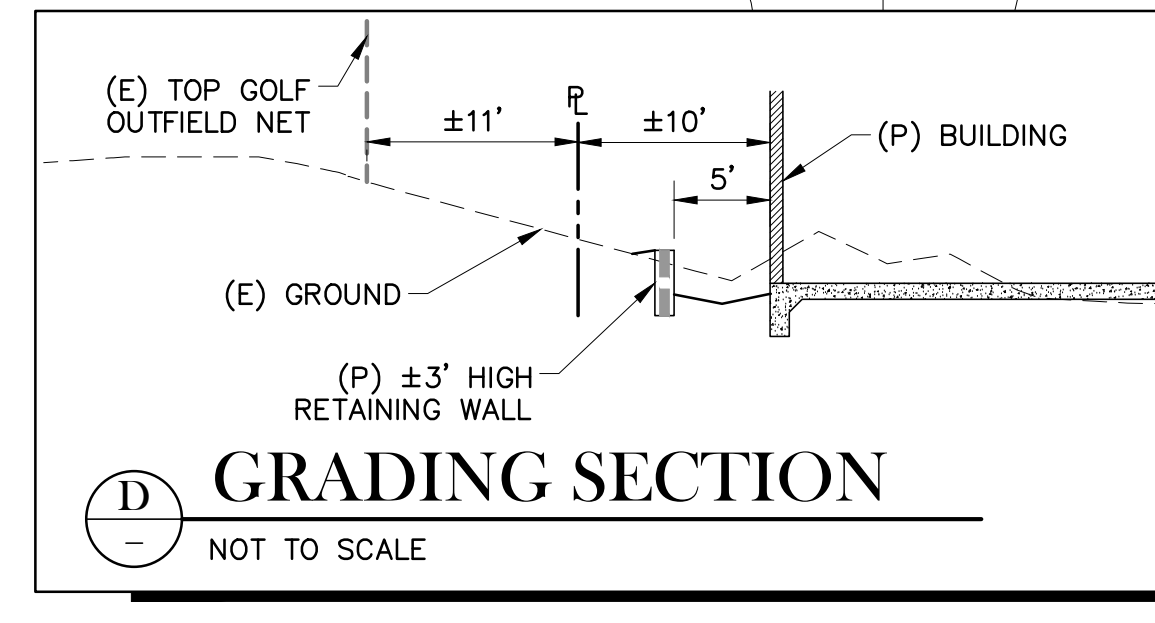
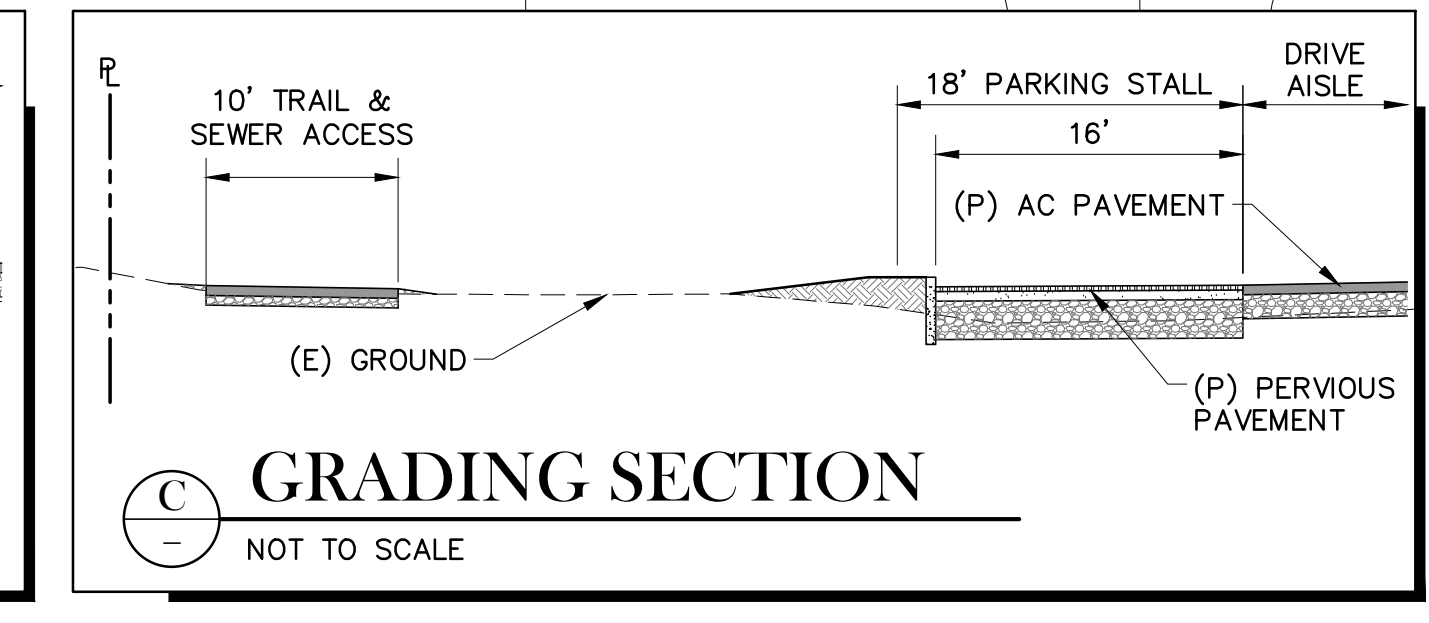
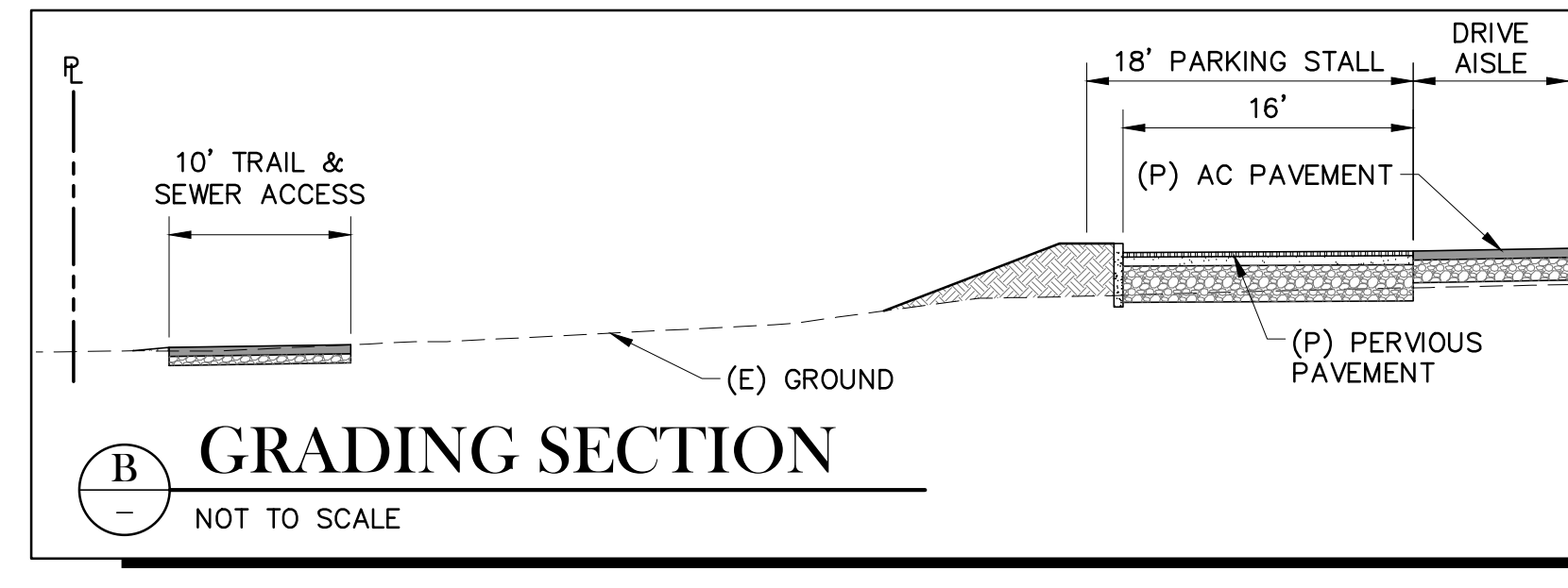
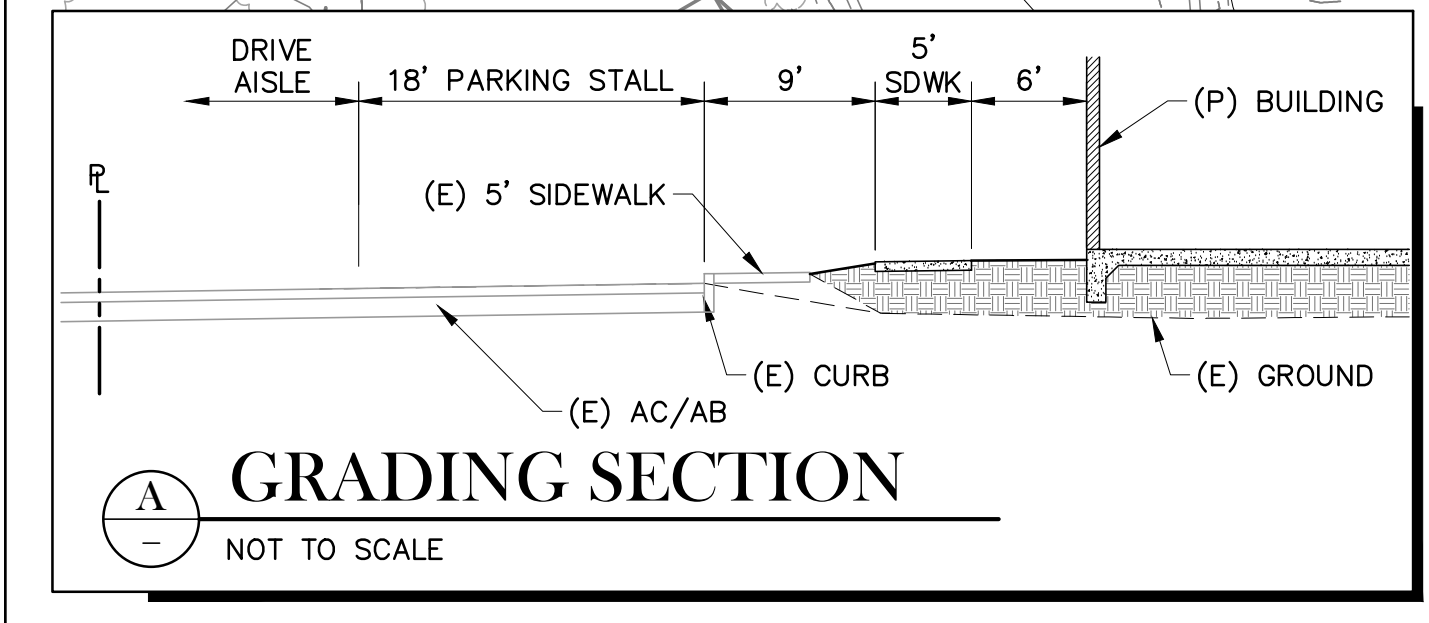
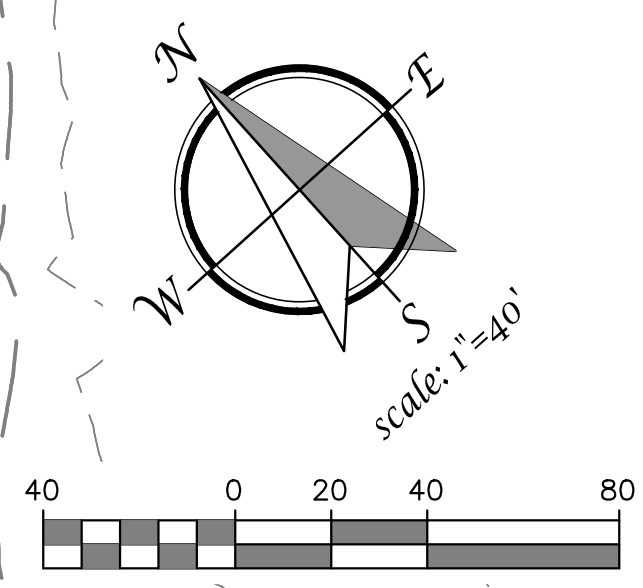
PA:\Projects\444-001\02 DWG\8- Planning\916\Preliminary Grading Plan - Tower.dwg, Date: 09/30/15, 07:02:20

MODIFIED - PRELIMINARY
 GRADING & DRAINAGE - EAST
NCRSP - PARCEL 49
 MAJOR PROJECT PERMIT - STAGE 1
 ROSEVILLE, CA
 SHEET 2 OF 2



DESCRIPTION	LEGEND	
	PROPOSED	EXISTING
DESIGN ELEVATION	130.0 FG	(98.0) FF
CONTOUR	130	130
STORM DRAIN		
MANHOLE		
DROP INLET		
WATER TREATMENT DEVICE		
GRADE BREAK		
OVERLAND RELEASE		
LANDSCAPE FLOW DIRECTION		
SWALE FLOWLINE		

LOW IMPACT DEVELOPMENT L.I.D. LEGEND	
PERVIOUS SURFACE	
WATER QUALITY SWALES	



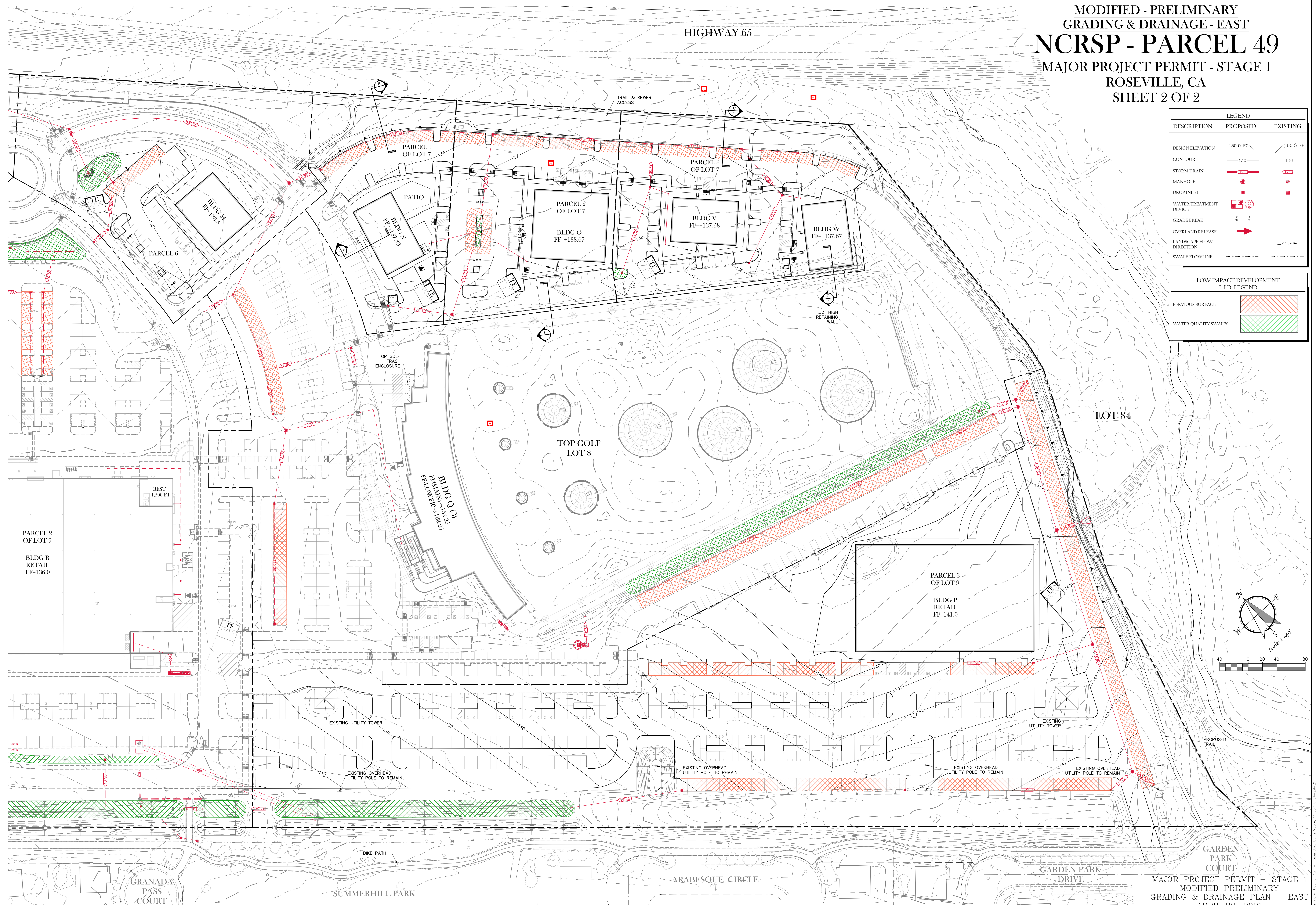
SHEET
2 OF 2

MAJOR PROJECT PERMIT - STAGE 1
 MODIFIED PRELIMINARY
 GRADING & DRAINAGE PLAN - EAST
 APRIL 29, 2021

TSD ENGINEERING, INC.
 expect more.
 785 Orchard Drive, Suite #110
 Folsom, CA 95630
 Phone: (916) 608-0707
 Fax: (916) 608-0701

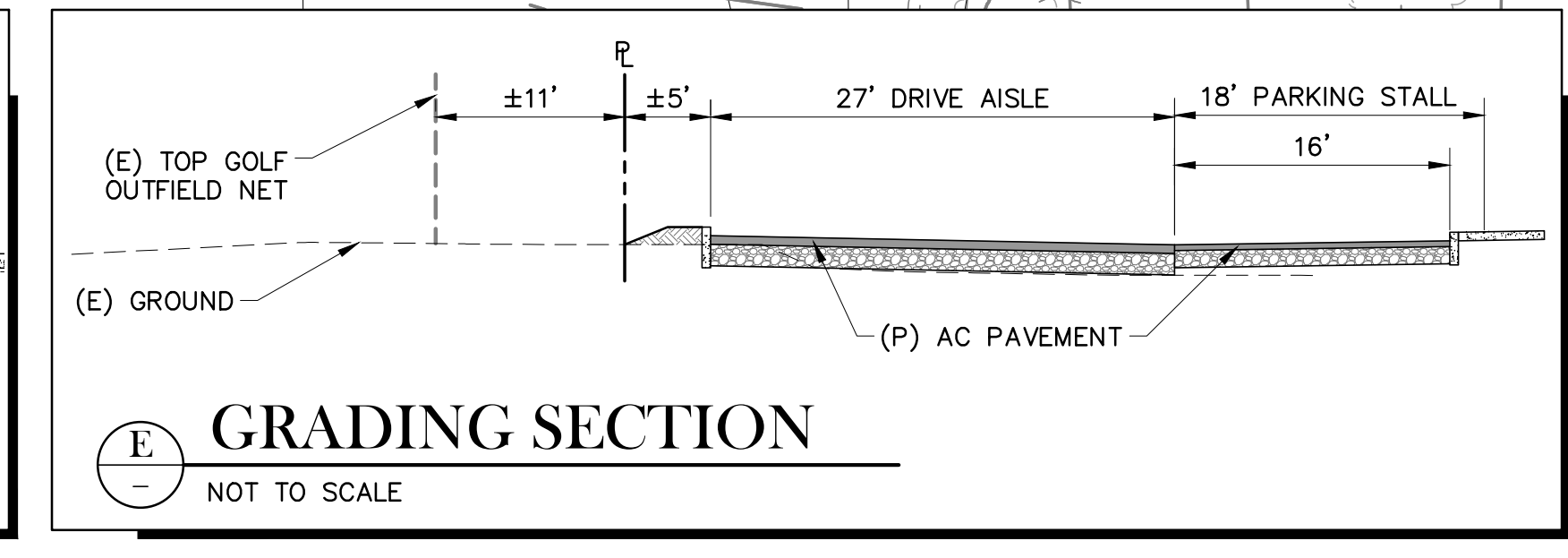
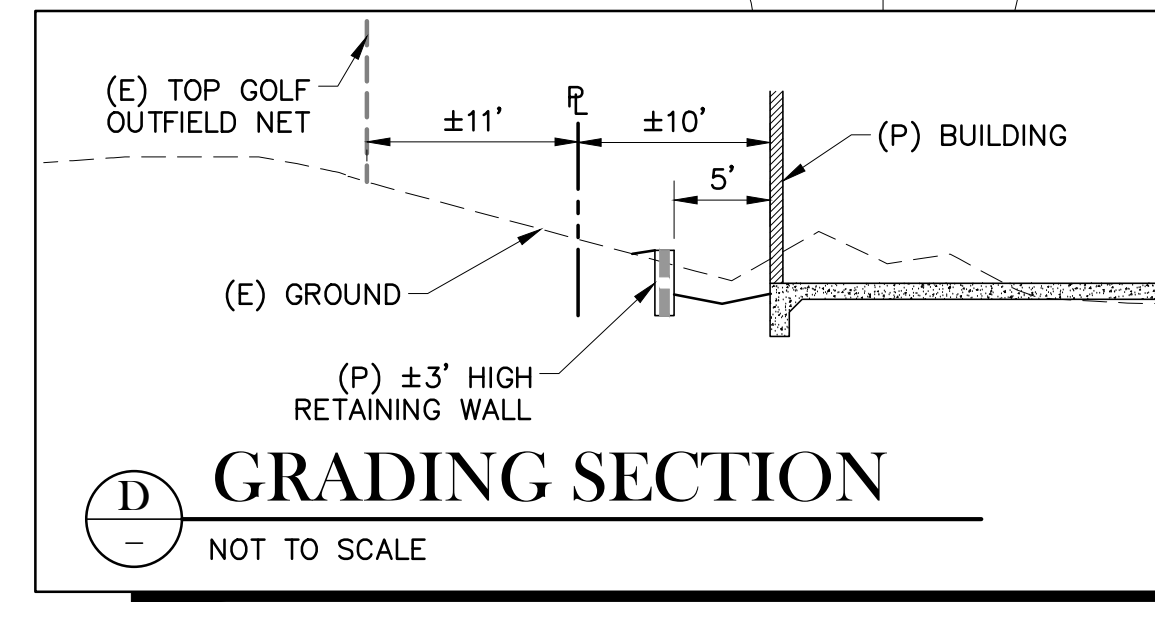
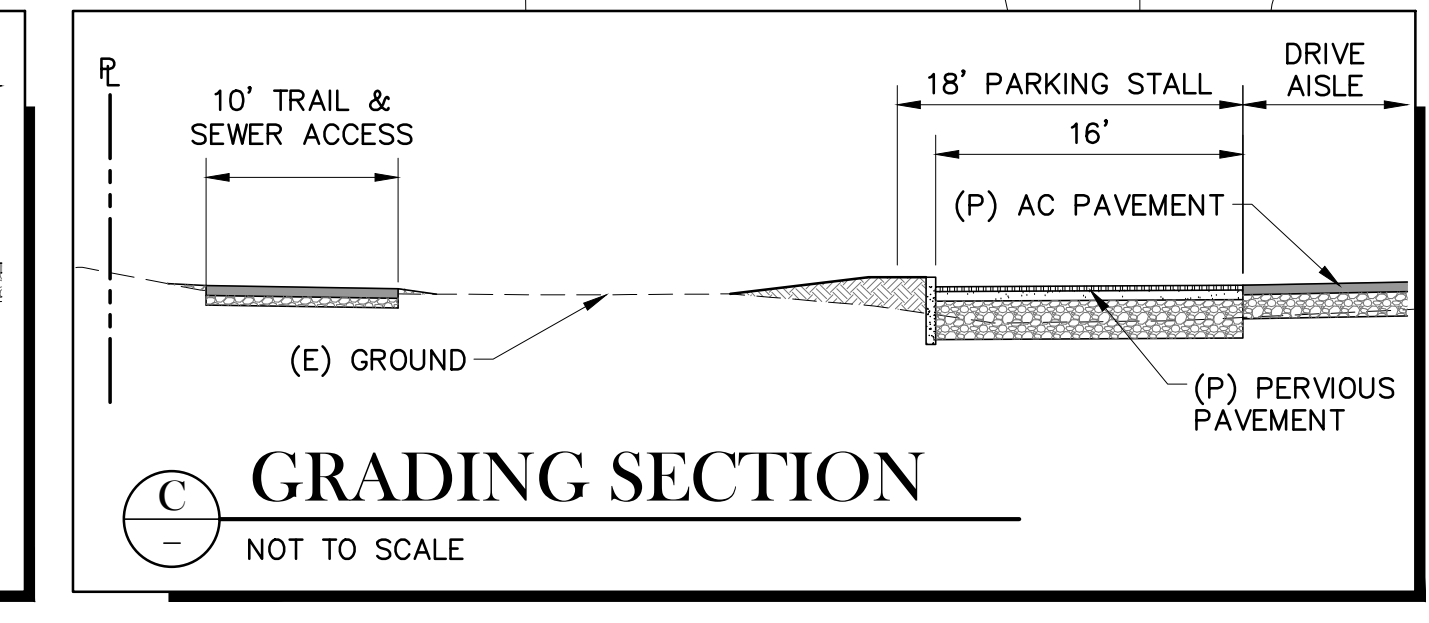
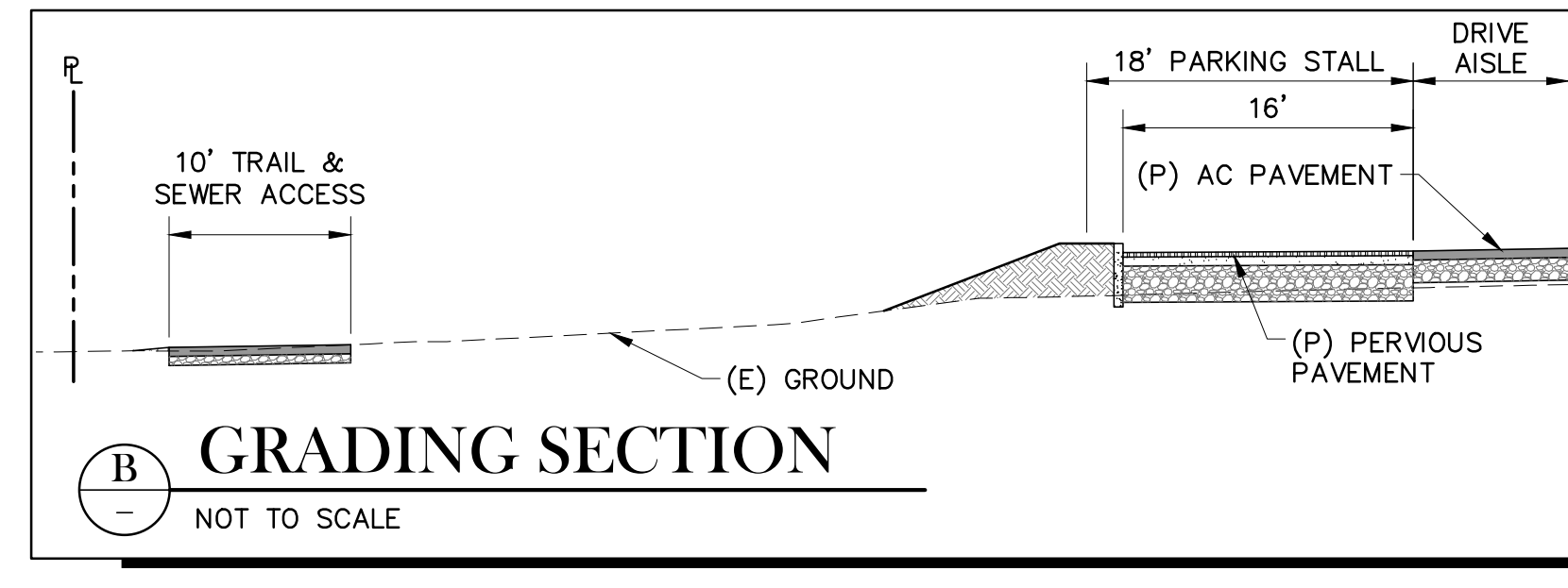
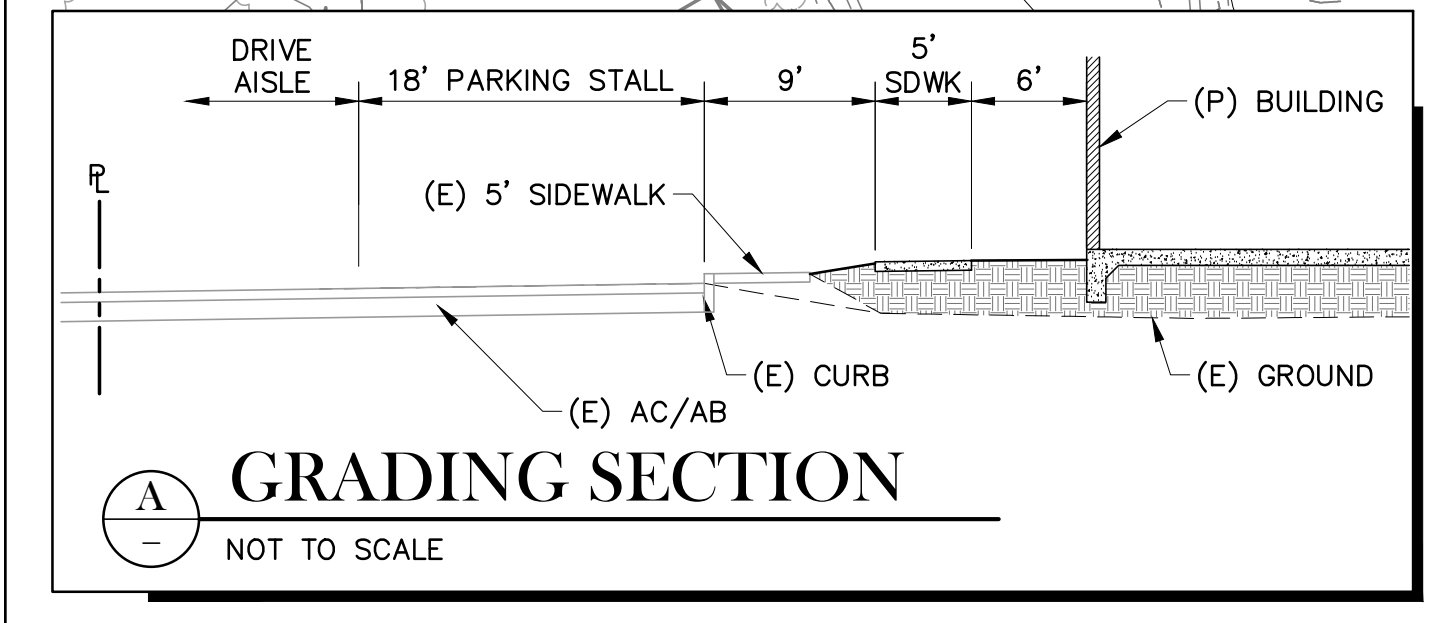
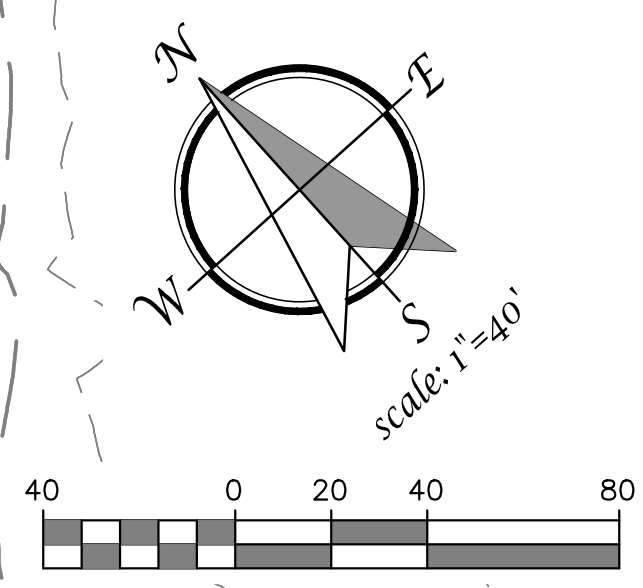
P:\Projects\444-0302\DWG\1 - Preliminary\Grading - Roseville.dwg, Date: 11/23/17, 11:29:21

MODIFIED - PRELIMINARY
 GRADING & DRAINAGE - EAST
NCRSP - PARCEL 49
 MAJOR PROJECT PERMIT - STAGE 1
 ROSEVILLE, CA
 SHEET 2 OF 2



DESCRIPTION	LEGEND	
	PROPOSED	EXISTING
DESIGN ELEVATION	130.0 FG	(98.0) FF
CONTOUR	130	130
STORM DRAIN		
MANHOLE		
DROP INLET		
WATER TREATMENT DEVICE		
GRADE BREAK		
OVERLAND RELEASE		
LANDSCAPE FLOW DIRECTION		
SWALE FLOWLINE		

LOW IMPACT DEVELOPMENT L.I.D. LEGEND	
PERVIOUS SURFACE	
WATER QUALITY SWALES	

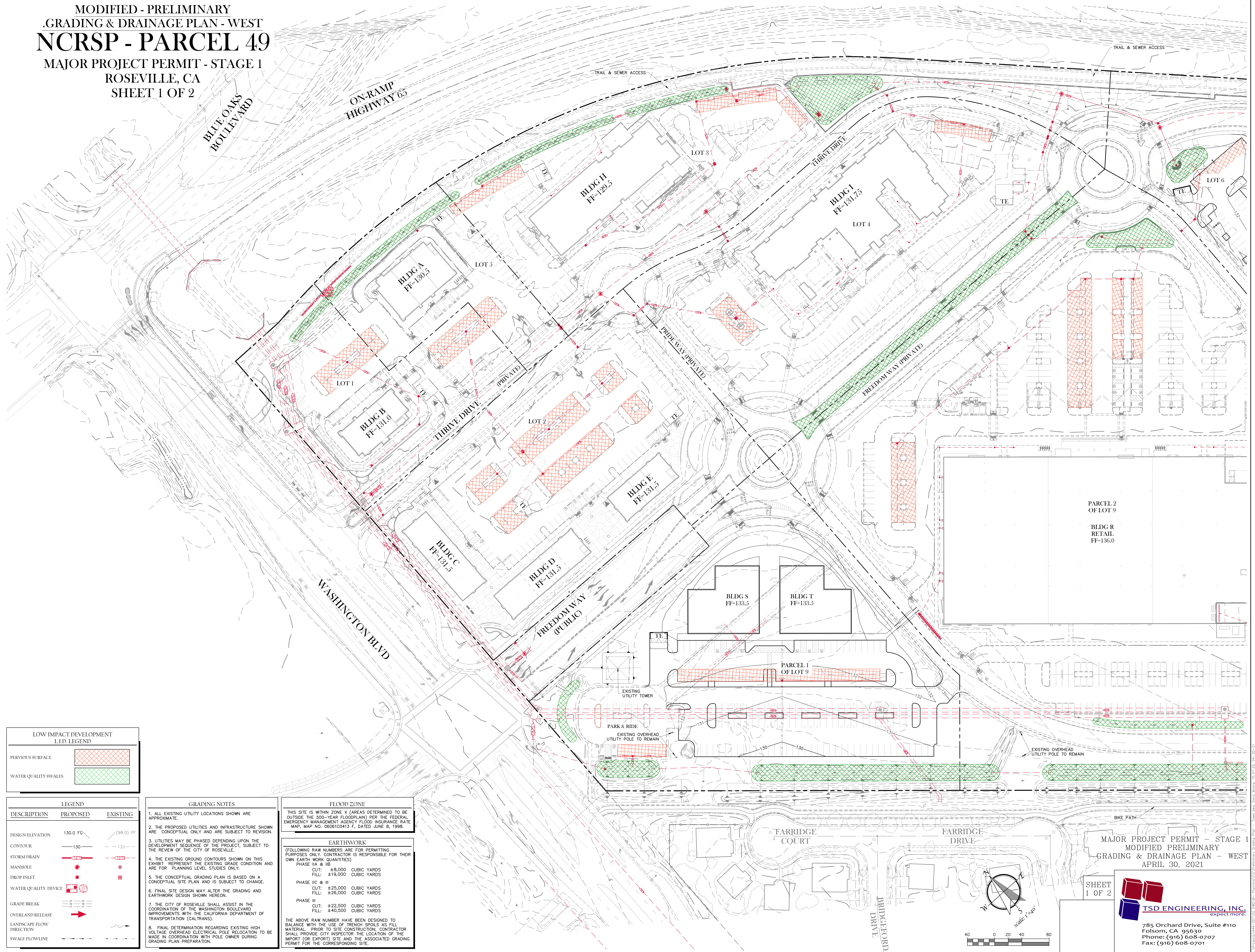


SHEET
2 OF 2

MAJOR PROJECT PERMIT - STAGE 1
 MODIFIED PRELIMINARY
 GRADING & DRAINAGE PLAN - EAST
 APRIL 29, 2021

TSD ENGINEERING, INC.
 expect more.
 785 Orchard Drive, Suite #110
 Folsom, CA 95630
 Phone: (916) 608-0707
 Fax: (916) 608-0701

MODIFIED - PRELIMINARY
 .GRADING & DRAINAGE PLAN - WEST
NCRSP - PARCEL 49
 MAJOR PROJECT PERMIT - STAGE 1
 ROSEVILLE, CA
 SHEET 1 OF 2



LOW IMPACT DEVELOPMENT L.I.D. LEGEND

PERVIOUS SURFACE	
WATER QUALITY SWALES	

LEGEND

DESCRIPTION	PROPOSED	EXISTING
DESIGN ELEVATION	130.0 FG	(98.0) FF
CONTOUR		
STORM DRAIN		
MANHOLE		
PROP INLET		
WATER QUALITY DEVICE		
GRADE BREAK		
OVERLAND RELEASE		
LANDSCAPE FLOW DIRECTION		
SWALE FLOWLINE		

GRADING NOTES

1. ALL EXISTING UTILITY LOCATIONS SHOWN ARE APPROXIMATE.
2. THE PROPOSED UTILITIES AND INFRASTRUCTURE SHOWN ARE CONCEPTUAL ONLY AND ARE SUBJECT TO REVISION.
3. UTILITIES MAY BE PHASED DEPENDING UPON THE DEVELOPMENT SEQUENCE OF THE PROJECT, SUBJECT TO THE REVIEW OF THE CITY OF ROSEVILLE.
4. THE EXISTING GROUND CONTOURS SHOWN ON THIS EXHIBIT REPRESENT THE EXISTING GRADE CONDITION AND ARE FOR PLANNING LEVEL STUDIES ONLY.
5. THE CONCEPTUAL GRADING PLAN IS BASED ON A CONCEPTUAL SITE PLAN AND IS SUBJECT TO CHANGE.
6. FINAL SITE DESIGN MAY ALTER THE GRADING AND EARTHWORK DESIGN SHOWN HEREON.
7. THE CITY OF ROSEVILLE SHALL ASSIST IN THE COORDINATION OF THE WASHINGTON BOULEVARD IMPROVEMENTS WITH THE CALIFORNIA DEPARTMENT OF TRANSPORTATION (CALTRANS).
8. FINAL DETERMINATION REGARDING EXISTING HIGH VOLTAGE OVERHEAD ELECTRICAL POLE RELOCATION TO BE MADE IN COORDINATION WITH POLE OWNER DURING GRADING PLAN PREPARATION.

FLOOD ZONE

THIS SITE IS WITHIN ZONE X (AREAS DETERMINED TO BE OUTSIDE THE 500-YEAR FLOODPLAIN) PER THE FEDERAL EMERGENCY MANAGEMENT AGENCY FLOOD INSURANCE RATE MAP, MAP NO. 060610413 F, DATED JUNE 8, 1998.

EARTHWORK
 (FOLLOWING RAW NUMBERS ARE FOR PERMITTING PURPOSES ONLY. CONTRACTOR IS RESPONSIBLE FOR THEIR OWN EARTH WORK QUANTITIES)

PHASE IIA & IIB	CUT: ±8,000 CUBIC YARDS
	FILL: ±19,000 CUBIC YARDS
PHASE IIC & III	CUT: ±25,000 CUBIC YARDS
	FILL: ±26,000 CUBIC YARDS
PHASE III	CUT: ±22,500 CUBIC YARDS
	FILL: ±40,500 CUBIC YARDS

THE ABOVE RAW NUMBER HAVE BEEN DESIGNED TO BALANCE WITH THE USE OF TRENCH SPILLS AS FILL MATERIAL. PRIOR TO SITE CONSTRUCTION, CONTRACTOR SHALL PROVIDE CITY INSPECTOR THE LOCATION OF THE IMPORT (OR EXPORT) SITE AND THE ASSOCIATED GRADING PERMIT FOR THE CORRESPONDING SITE.

MAJOR PROJECT PERMIT - STAGE 1
 MODIFIED PRELIMINARY
 GRADING & DRAINAGE PLAN - WEST
 APRIL 30, 2021

SHEET 1 OF 2

TS&D ENGINEERING, INC.
 expect more.

785 Orchard Drive, Suite #110
 Folsom, CA 95630
 Phone: (916) 608-0707
 Fax: (916) 608-0701